

Strom Plumbing

BY
Sign of  the Crab

Ph: (916) 638-2722 / Fax: (916) 638-2725

Installation Information

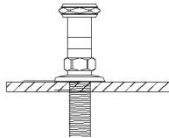
Item #P1064 Bridge Faucet

Warranted only if installed by a qualified licensed plumber. Use Teflon tape on all threaded connections.

Minimum hole size in sink or deck is 1" diameter

Maximum deck/sink thickness is 1 1/8"

1. Shut off the water supply before installation.
2. Minimum hole size of 1" is required in sink or deck at 8" centers
3. Insert the threaded nipples into the bottom of the deck mount coupler (shorter end of nipple goes to coupler. Use Teflon tape on all threads.
4. Insert the threaded nipples into the holes in the deck/sink. Secure them to the deck by threading the lockdown nuts onto the nipples from under the sink and tighten.



5. Attach the faucet body to the deck mount couplers and tighten nuts to secure (use care not to scratch the finish)
6. Attach supply lines to the 1/2" IPS faucet shanks.
7. Remove finial from spout shaft and attach spout to shaft. Re-install finial, hand tighten.
8. Remove the aerator from the end of the spout and turn on water supply to flush hot and cold lines until the water is clear.
9. Re-install the aerator and enjoy your beautiful faucet.
10. Make no adjustments to valves or valve stems. They are tested at the factory for optimum performance.

