

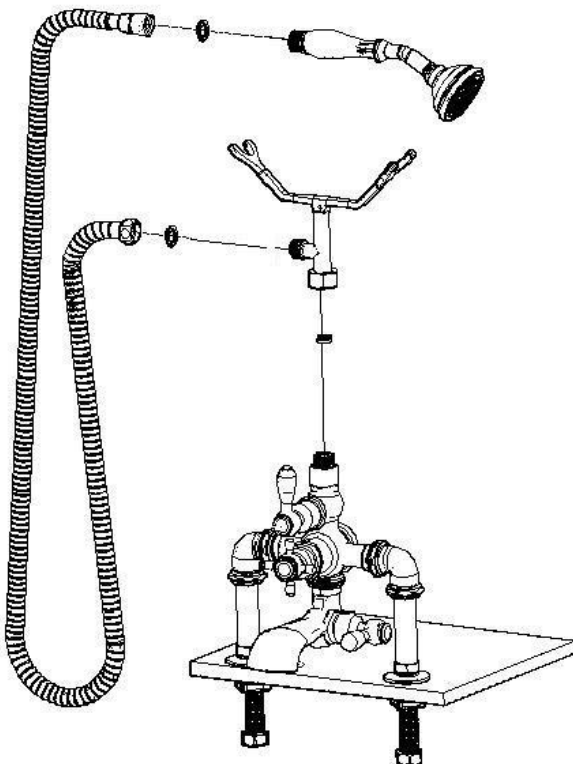
Installation Information

ITEM #P0891

Thermostatic Deck Mount Faucet, 7" Centers

Warranted only when installed by a qualified, licensed plumber. Please use Teflon tape on all threaded connections.

1. Shut off the water supply to the fixture before installation.
2. Connect the shorter threaded ends of the hook-up nipples to the deck mount couplers.
3. Loosely attach the deck mount coupler nuts and screen washers to the faucet. Insert the nipples through the 2 holes in the deck. Screw the lock nuts onto the threaded nipples and tighten to secure faucet to deck/tub.
4. Tighten the nuts of the deck mount couplers to the faucet body once positioned correctly.
5. Place the washer inside the brass nut at the bottom of the cradle, then connect the cradle to the faucet. Tighten the nut.
6. Connect the nut end of the hose to the outlet of the cradle and attach the tapered end of the hose to the hand shower. Place the hand shower on the cradle.
7. Turn on the water supply.
8. Make no adjustments to valves or valve stems. They are tested at the factory for optimum performance.



This faucet is tested to remain within 1 degree Fahrenheit of your desired setting throughout its operation, with an automatic temperature stop at 104 degrees Fahrenheit. The unit also has a built-in anti-syphon.

Parts Included:

- Faucet Body w/Handles
- Deck Mount Couplers w/screen washers (pair)
- Nipple hook-up kit
- Handheld Shower w/ Hose and washers