

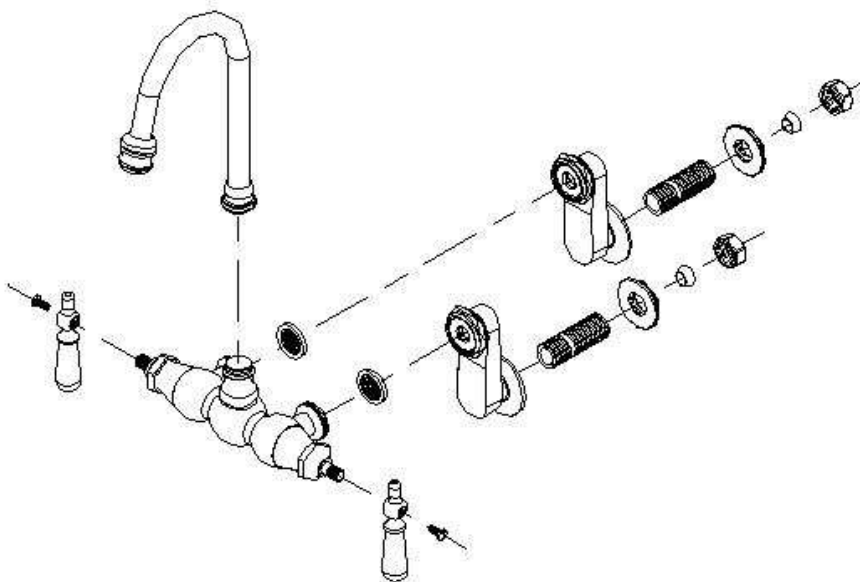
## Installation Information

Item #P0804

### Gooseneck Leg Tub Diverter Faucet, Variable Centers

Warranted only when installed by a qualified, licensed plumber. Please use Teflon tape on all threaded connections.

1. Shut off the water supply to the fixture before installation.
2. Thread the shorter end of the hook-up inlet tubes into the backside of the swing arm coupler. Loosely tighten the swing arm couplers to allow for the centers adjustment.
3. Insert the inlet nipples through the 2 holes on the tub. Screw the lock nuts onto the threaded nipples and tighten to secure the faucet to your tub.
4. Tighten the nut on the coupler to secure to the faucet body at the desired placement.
5. Attach the spout and tighten the hold down nut to hold in place.
6. Attach the handles with the screws provided.
7. This diverter faucet has an outlet to add either a handheld shower or riser, sold separately.
8. Attach your supply lines to the 1/2" IPS faucet inlet tubes.
9. Make no adjustments to valves or valve stems. They are tested at the factory for optimum performance.



#### Parts Included:

- Faucet Body w/Swing Arm Couplers
- Spout
- Handles (2)
- 1/2" IPS Inlet Nipples (2)
- Lock Down Nuts (2)
- Supply Nut/ Washer (2)