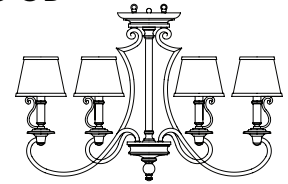
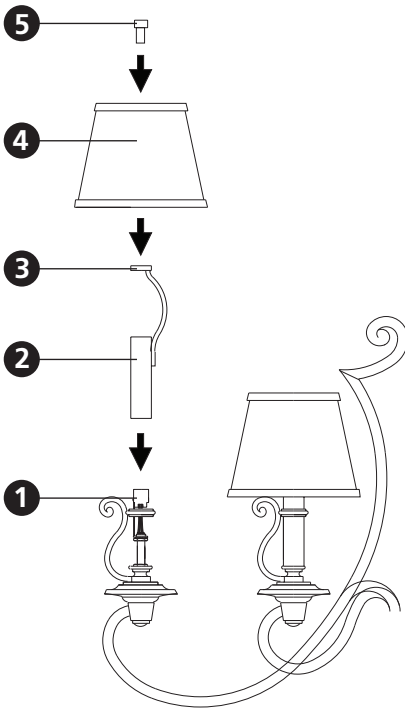


Family: Plymouth | Item No. 4245 OB



Drawing 1 - Fixture Assembly



▼ start here

1

1. Find a clear area in which you can work.
2. Unpack fixture and glass from carton.
3. Carefully review instructions prior to assembly.

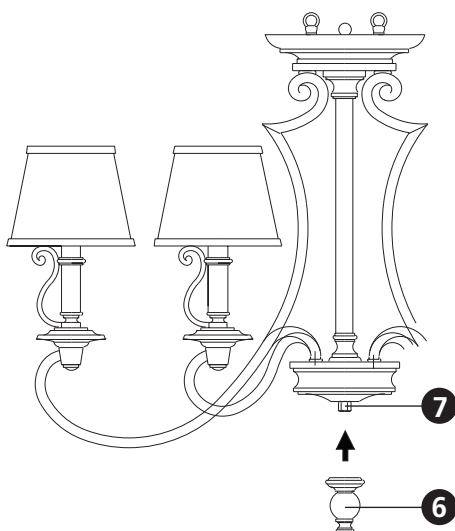
***** The construction of this fixture will be accomplished by assembling the main body of the fixture, and then hanging the fixture from the ceiling.**

SAFETY WARNING: READ WIRING AND GROUNDING INSTRUCTIONS (I.S. 18) AND ANY ADDITIONAL DIRECTIONS. TURN POWER SUPPLY OFF DURING INSTALLATION. IF NEW WIRING IS REQUIRED, CONSULT A QUALIFIED ELECTRICIAN OR LOCAL AUTHORITIES FOR CODE REQUIREMENTS.

2

1. Slip candle sleeve (2) through ring, and over socket (1). To prevent scratching the candle sleeve when slipping it through the ring, wrap the sleeve in a piece of paper. After candle sleeve is set, the paper can be removed - see **Drawing 1**.
3. Set shade (4), on top of harp (3) and thread knob (5) into harp (3) to secure shade.
4. Thread bottom knob (6) onto coupler (7) located at the bottom of the fixture - see **Drawing 2**.
5. Please refer to the hanging instruction sheet (I.S. 19-75) provided to complete installation of this fixture.

Drawing 2 - Fixture Assembly



Note: Maximum wattage for 4245 fixture is 60 watts per bulb.

2.7.08