

CRYST RAMA



1958

95 Cantiague Rock Road, Westbury NY 11590
 ph: 516.931.9090 fax: 516.931.1254
 info@crystorama.com www.crystorama.com

MODEL#: 5168 ASSEMBLY AND DRESSING INSTRUCTIONS

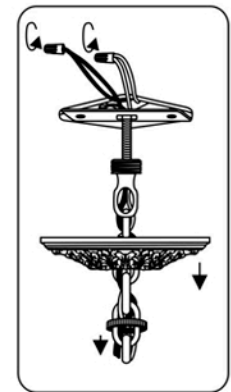
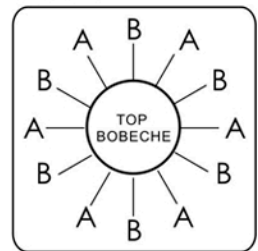
WARNING:

Electrical Danger Turn Power Off

All electrical components must be installed by a licensed electrician in accordance with the National Electric Code and the appropriate local electrical codes.

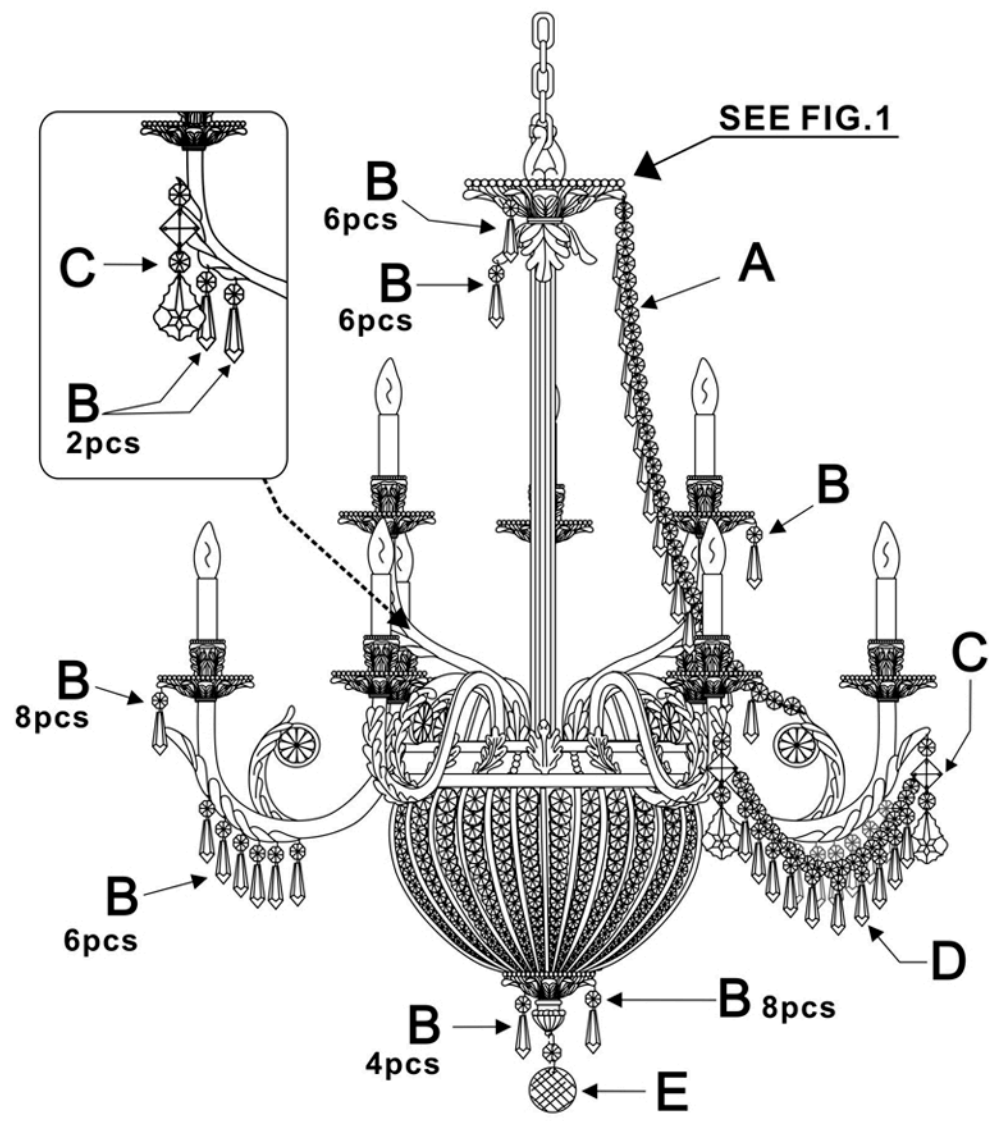
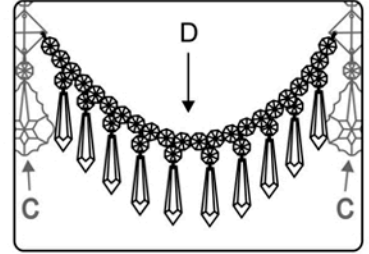


FIG. 1



1 Bobeche with 8 B Trim.

D Trim



- A= (14mm * 33pcs + 38mm * 15pcs) * 6sets
- B= (14mm + 38mm) * 138sets
- C= (14mm + 18mm + 14mm + 76mm) * 9sets
- D= [14mm * 22pcs + (14mm + 38mm) * 10pcs] * 6sets
- E= (14mm * 40mm) * 1set

You will need 12 - Cand. Bulb
 40 Watts Recommended
 60 Watts Max
 Bulb not included.