

# CRYST RAMA



1958

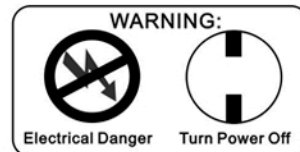
95 Cantiague Rock Road, Westbury NY 11590

ph:516.931.9090 fax: 516. 931.1254

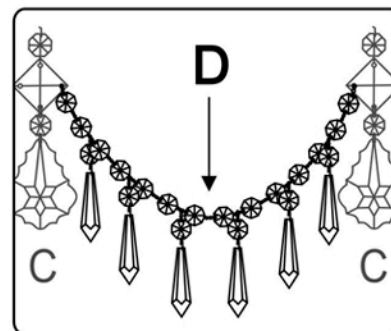
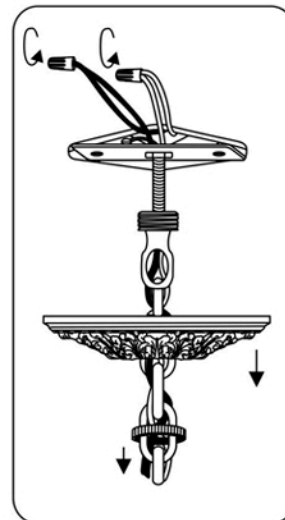
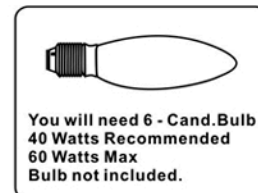
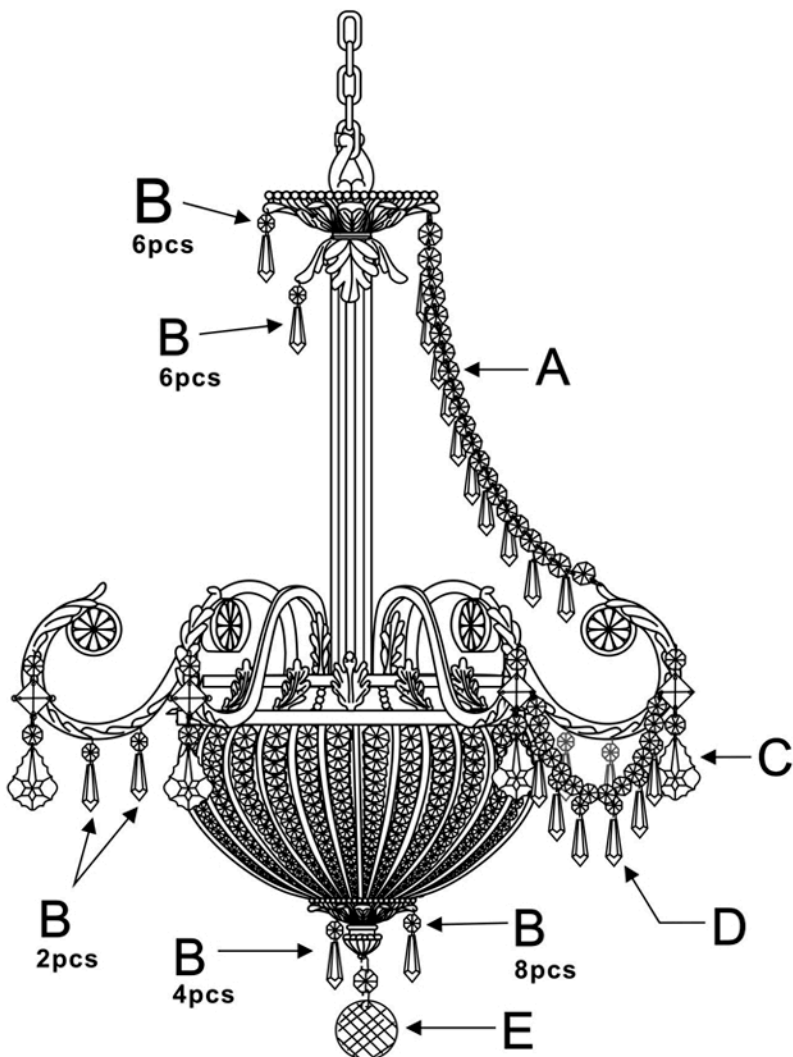
info@crystorama.com www.crystorama.com

**MODEL#:5164**

## ASSEMBLY AND DRESSING INSTRUCTIONS



All electrical components must be installed by a licensed electrician in accordance with the National Electric Code and the appropriate local electrical codes.



A= (14mm\*21pcs+14mm\*10pcs)\*6sets  
(EVERY 2 JEWELS)

B= (14mm+38mm)\* 36sets

C= (14mm+18mm+14mm+76mm)\*6sets

D= [14mm\*14pcs+(14mm+38mm)\*6pcs]\*6sets  
(EVERY 2 JEWELS)

E= (14mm+40mm)\* 1set