

CRYST RAMA



1958

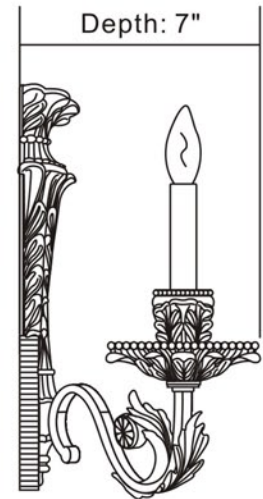
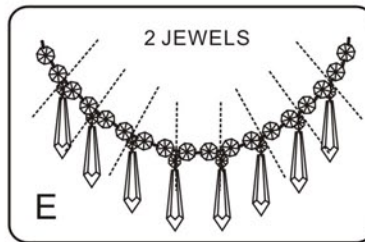
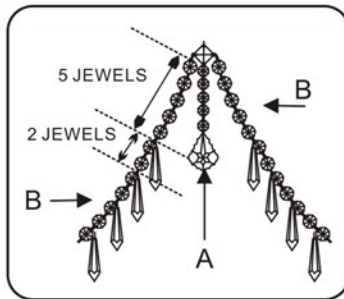
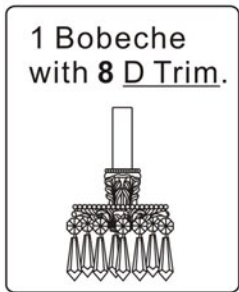
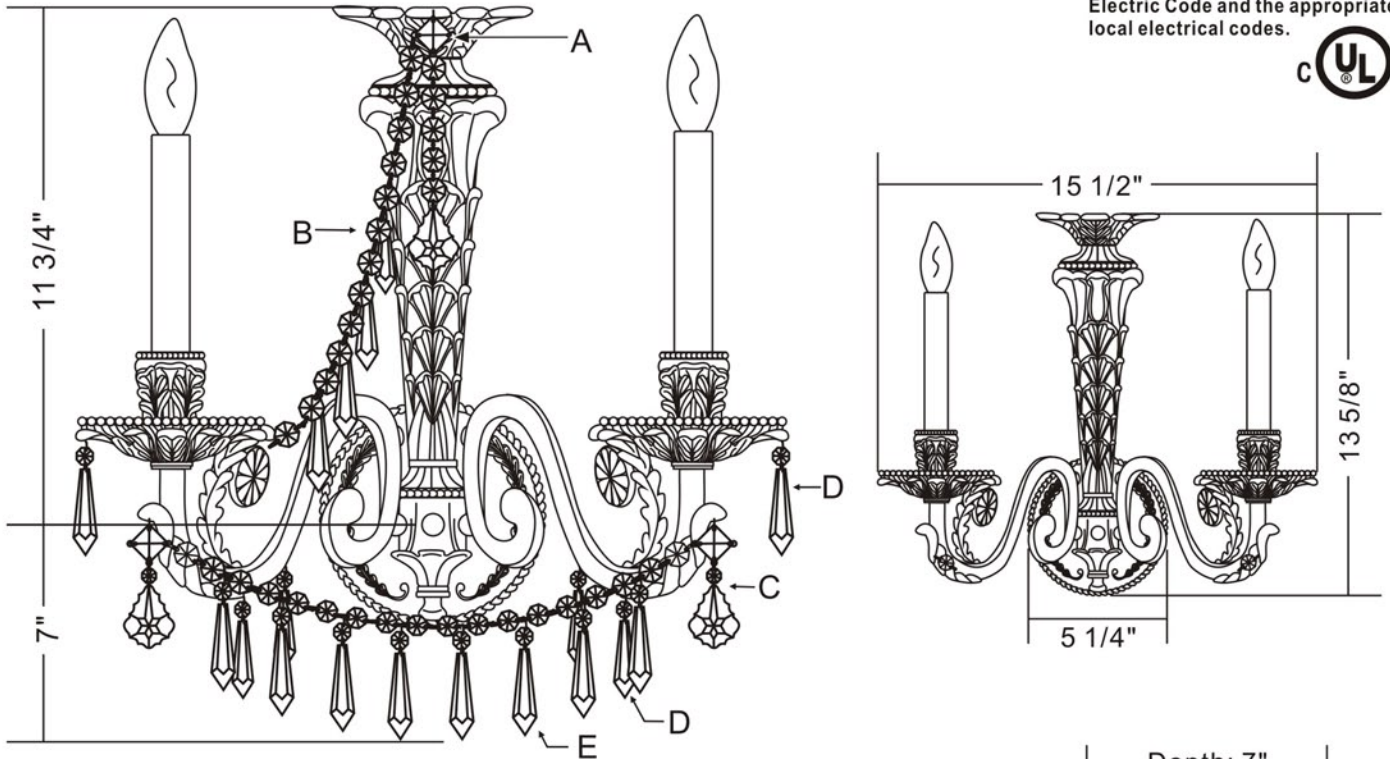
95 Cantiague Rock Road, Westbury NY 11590
 ph:516.931.9090 fax: 516. 931.1254
 info@crystorama.com www.crystorama.com

MODEL#:5162 ASSEMBLY AND DRESSING INSTRUCTIONS

WARNING:

Electrical Danger Turn Power Off

All electrical components must be installed by a licensed electrician in accordance with the National Electric Code and the appropriate local electrical codes.



- A= (18mm+14mm*5pcs+76mm)*1set
- B= (14mm*13pcs+38mm*4pcs)*2sets
- C= (18mm+14mm+76mm)*2sets
- D= (14mm+38mm)*20sets
- E= [14mm*18pcs+(14mm+38mm)*8pcs]*1set

You will need 2 - Cand. Bulb
 40 Watts Recommended
 60 Watts Max
 Bulb not included.