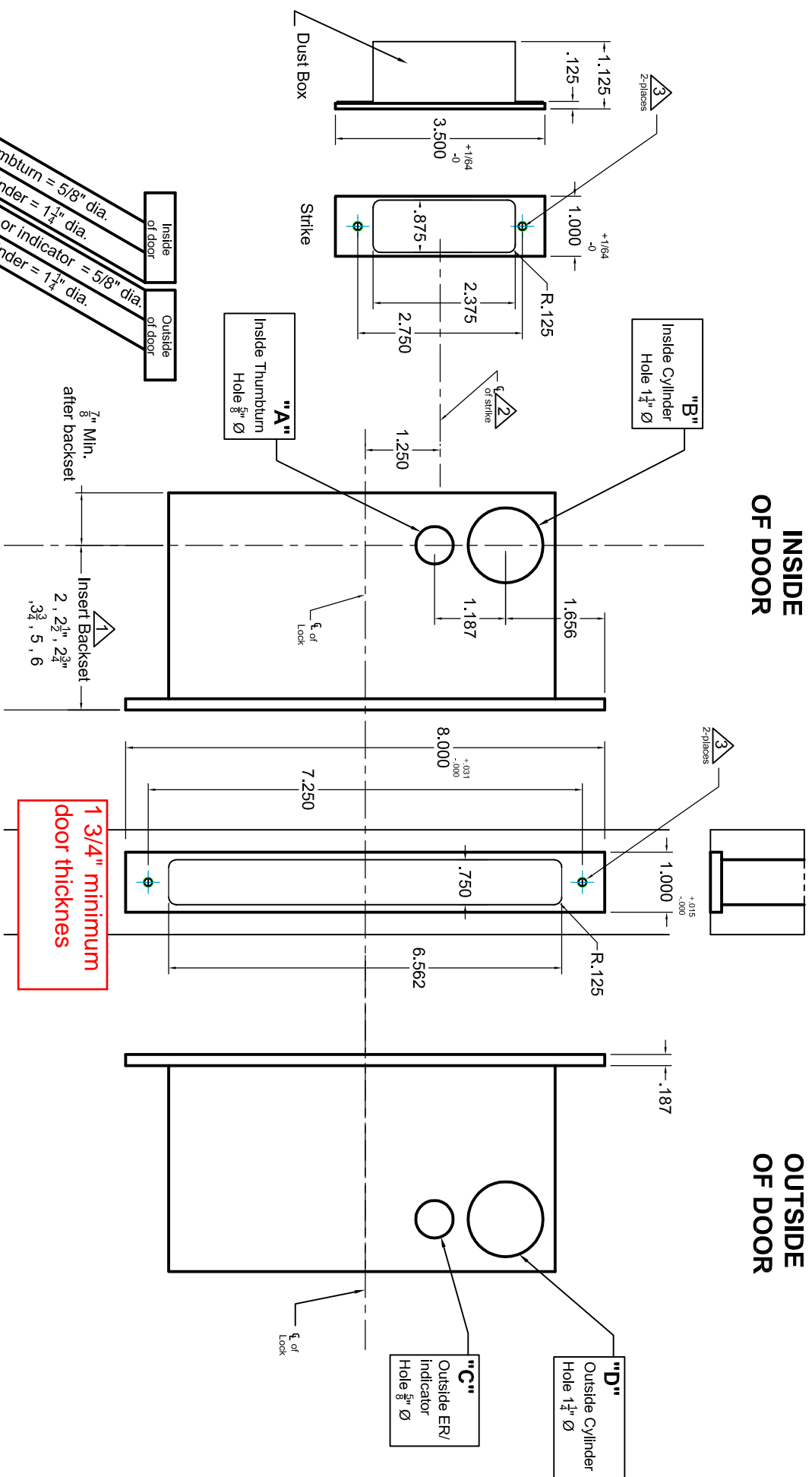


INSIDE OF DOOR

OUTSIDE OF DOOR



Lock Functions	Inside of door	Outside of door
2002CPDL-1	●	●
2002CPDL-2	●	●
2002CPDL-3	●	●
2002CPDL-4	●	●
2002CPDL-5	●	●

Required Holes

- "A" thumbturn = 5/8" dia.
- "B" cylinder = 1 1/4" dia.
- "C" ER or indicator = 5/8" dia.
- "D" cylinder = 1 1/4" dia.

- Notes:
- ▲ Insert backset here 2", 2 1/2", 2 3/4", 3 3/4", 5", 6"
 - ▲ Strike is 1 1/4" above centerline of lock
 - ▲ Prep for #8 wood or 8-32 machine screws

- Additional Notes:
- a) **Responsibility** : Door and frame manufacturers are responsible for providing adequate construction or re-inforcement for proper installation of hardware shown.
 - b) See catalog / spec sheets for additional lock details