

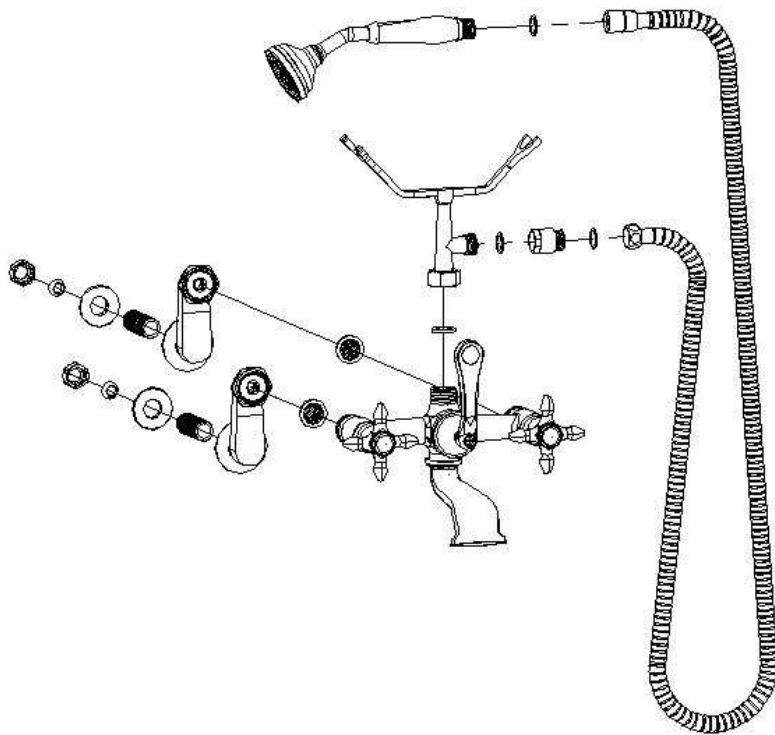
Installation Information

Item #P0146

British Telephone Leg Tub Faucet, with Swing Arm Couplers for Variable Centers from 3 3/8" to 12"

Warranted only when installed by a qualified licensed plumber. Use Teflon tape on all threaded connections.

1. Shut off the water supply to fixture before installation.
2. Loosen the nuts to make the swing arm couplers adjustable.
3. Connect the shorter threaded ends of nipples to the swing arms. Insert the threaded nipples through the 2 holes in the tub. Screw the lock nuts onto the threaded nipples and tighten.
Note: If installing this faucet on a "bathroom wall" then the minimum center to center measurement is 4 1/2".
4. Position and tighten the nuts of the swing arm couplers to the faucet body.
5. Place the washer and the brass nut at the bottom of the cradle, and then connect the cradle to the faucet. Tighten the nut.
6. Thread on the vacuum breaker to the outlet of the cradle.
7. Attach the tapered end of the hose to the hand shower and the nut end to the vacuum breaker.
8. Place the hand shower on the cradle.
9. Attach your supply lines to the 1/2" IPS inlet nipple.
10. Make no adjustments to valves or valve stems. They are tested at the factory for optimum performance.



Parts Included:

- Faucet Body
- Swing Arm Couplers, pair
- Screen Washers (2)
- Inlet Cradle
- Vacuum Breaker
- Handheld Shower
- Hose with washers