

CRYST RAMA



1958

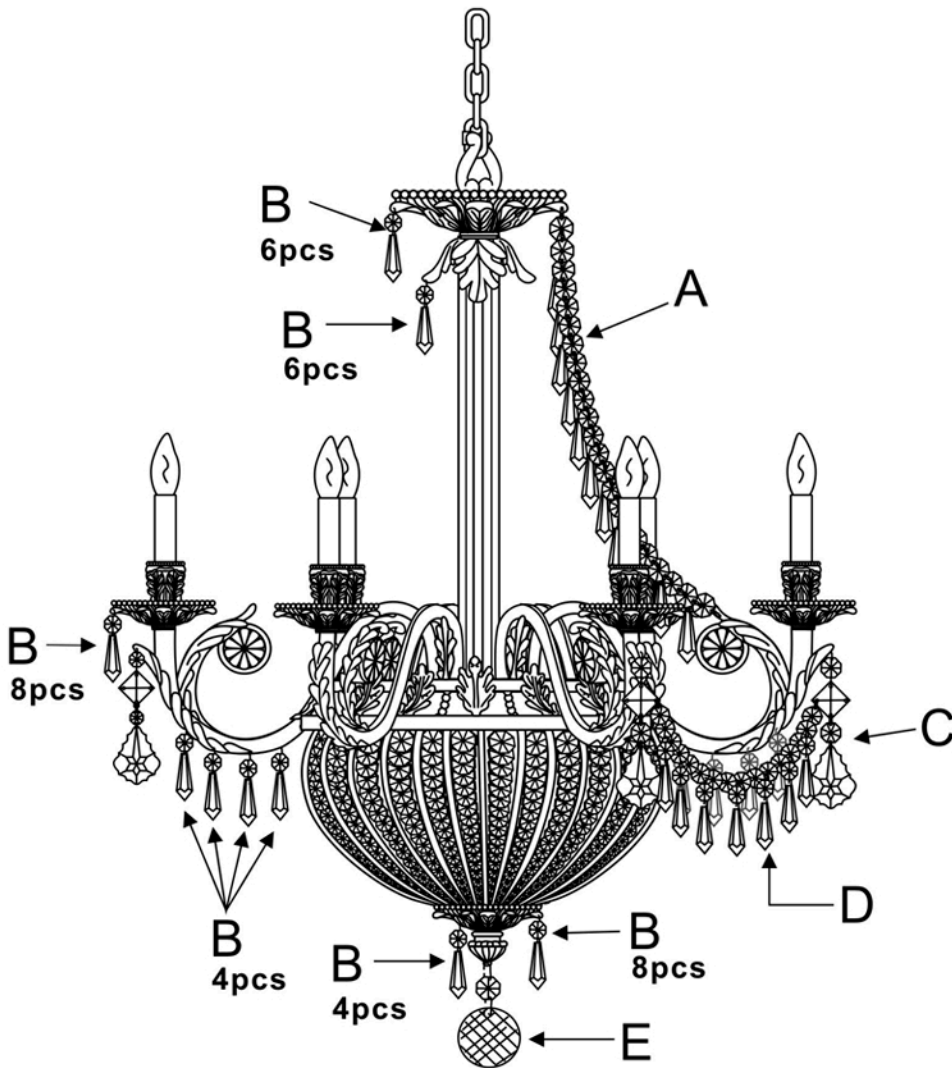
95 Cantiague Rock Road, Westbury NY 11590
 ph:516.931.9090 fax: 516. 931.1254
 info@crystorama.com www.crystorama.com

MODEL#:5166 ASSEMBLY AND DRESSING INSTRUCTIONS

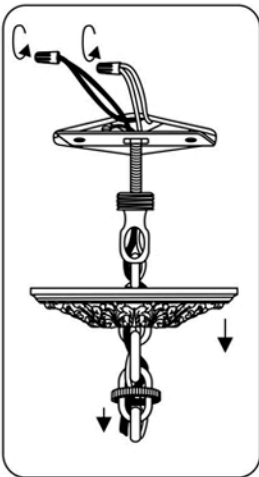
WARNING:

Electrical Danger Turn Power Off

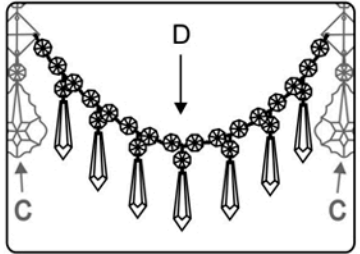
All electrical components must be installed by a licensed electrician in accordance with the National Electric Code and the appropriate local electrical codes.



You will need 9 - Cand. Bulb
 40 Watts Recommended
 60 Watts Max
 Bulb not included.



1 Bobeche
 with 8 B Trim.



- A= (14mm * 23pcs + 38mm * 10pcs) * 6sets
 (EVERY 2 JEWELS)
- B= (14mm + 38mm) * 96sets
- C= (14mm + 18mm + 14mm + 76mm) * 6sets
- D= [14mm * 16pcs + (14mm + 38mm) * 7pcs] * 6sets
 (EVERY 2 JEWELS)
- E= (14mm * 40mm) * 1set